



2022 OVERLAY PROGRAM

FEBRUARY 2022

MAYOR

MARIANNE KLAAS

CITY ADMINISTRATOR

DEAN ROHLA

PUBLIC WORKS DIRECTOR

SHAUN TOZER

CITY COUNCIL

POSITION #1 – STEVE FRIEDMAN

POSITION #2 – SCOTT MOORE

POSITION #3 – KIM MUROMOTO

POSITION #4 – BRUCE JONES

POSITION #5 – DEAN HACHAMOVITCH

SCHEDULE OF DRAWINGS

DWG NO. TITLE

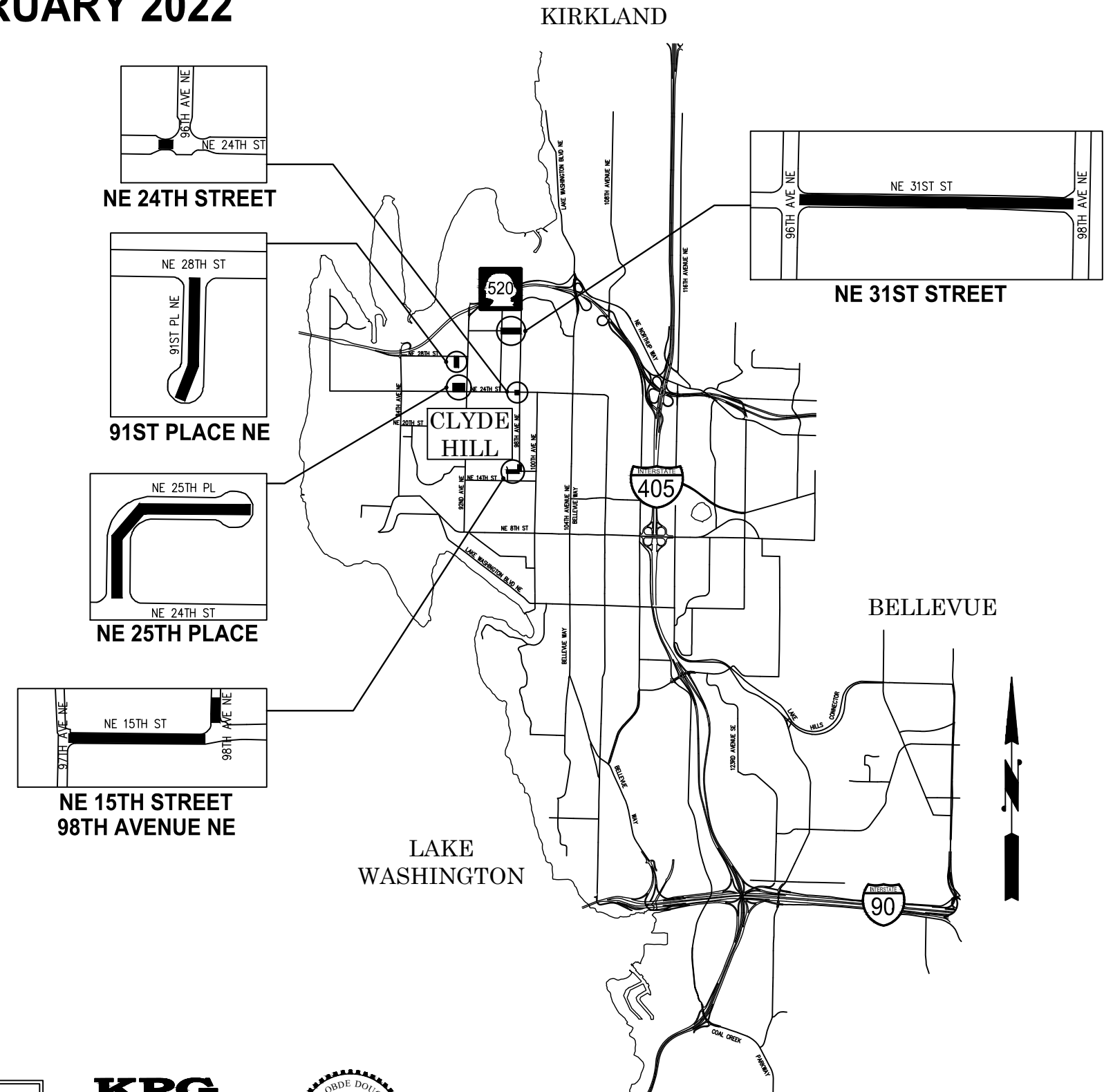
- 1 COVER SHEET
- 2 ALIGNMENT INFORMATION AND INDEX

SECTIONS AND DETAILS

- 3 OVERLAY TYPICAL SECTIONS
- 4 LEGEND, ABBREVIATIONS, AND TYPICAL DETAILS
- 5 TYPICAL DETAILS

OVERLAY PLANS

- 6 91ST PLACE NE (NE 28TH ST TO CUL-DE-SAC) & NE 15TH STREET (97TH AVE NE TO 98TH AVE NE) & 98TH AVE NE (NE 15TH ST INTERSECTION)
- 7 NE 25TH PLACE (NE 24TH ST TO CUL-DE-SAC) & NE 24TH STREET (96TH AVE NE INTERSECTION)
- 8 NE 31ST STREET (96TH AVE NE TO 98TH AVE NE)



CALL 2 DAYS
BEFORE YOU DIG
1-800-424-5555

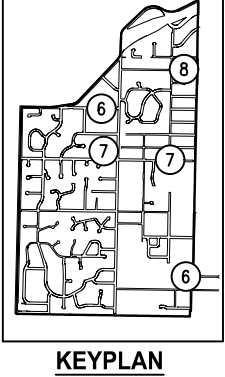
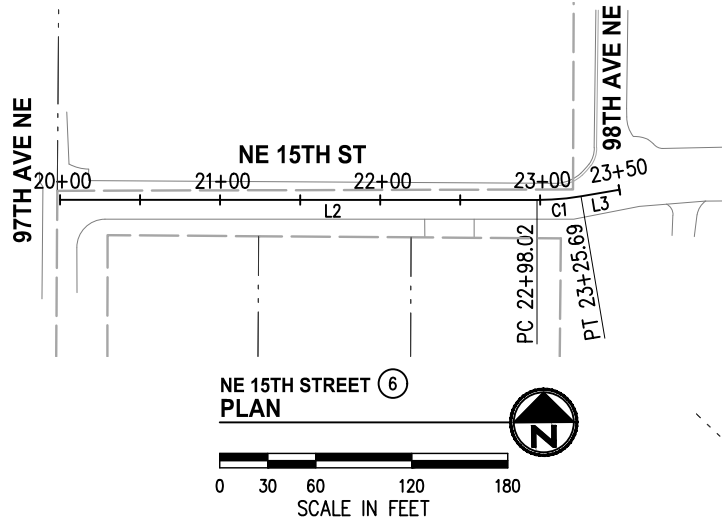
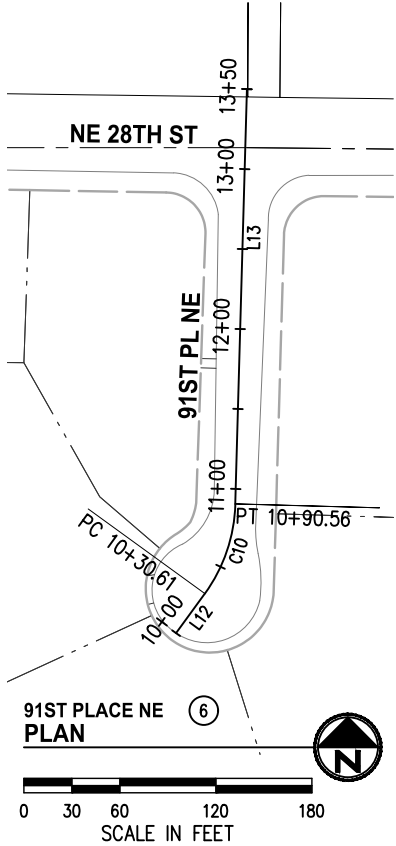
BID
DOCUMENTS

KPG
Interdisciplinary Design
SEATTLE
3131 Elliott Ave
Suite 400 WA 98121
(206) 286 1640
Tacoma
Wenatchee
www.kpg.com



VICINITY MAP
NOT TO SCALE

K:\PROJECTS\CLYDE HILL\21015W6-2022 Overlay\DESIGN\Drawings\Contract\21015W6INDX.dwg 1/24/2022 1:15 PM



SHEET LEGEND

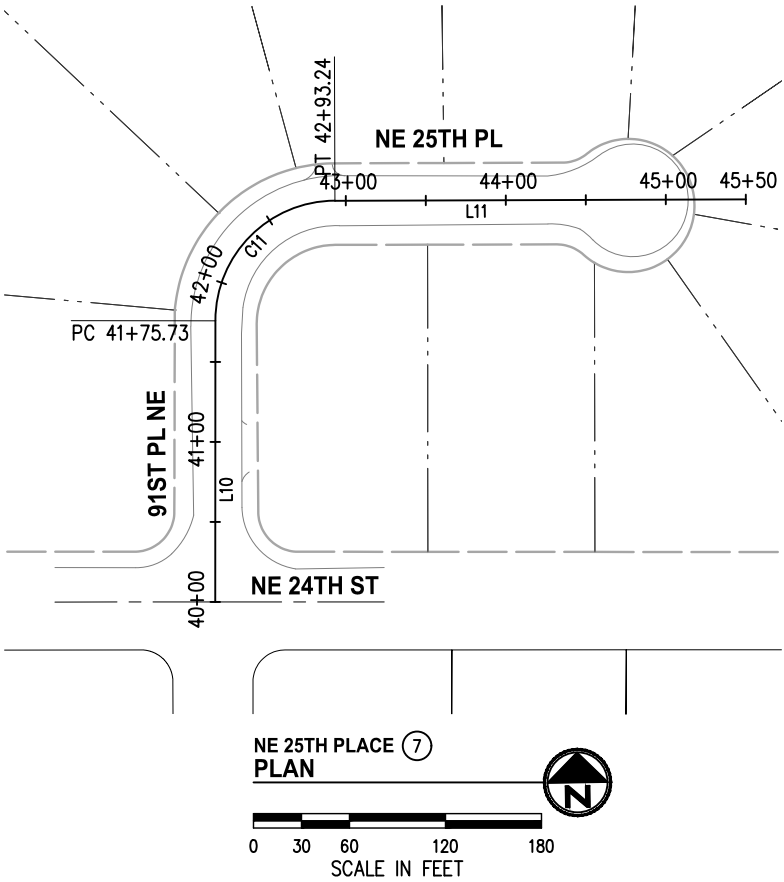
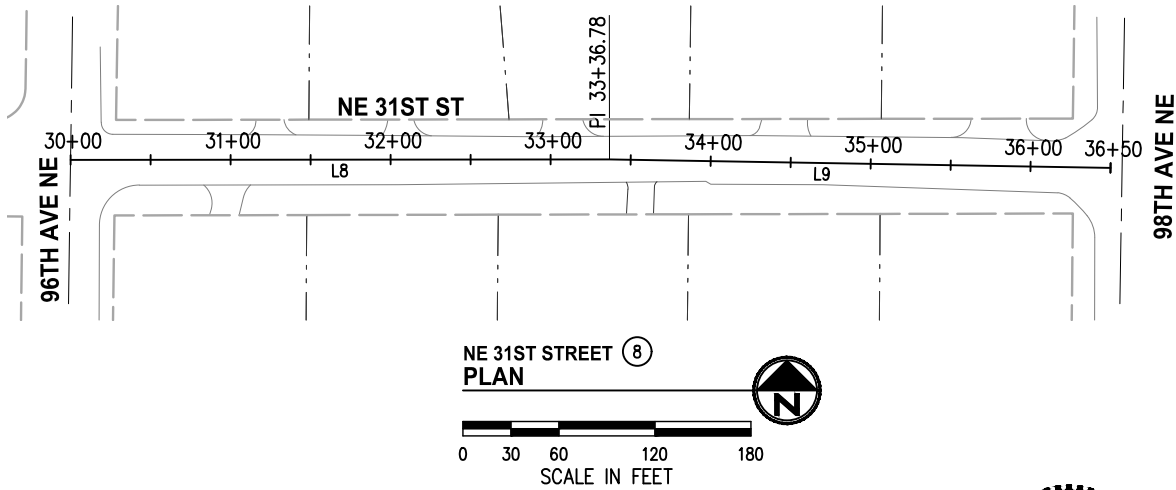
(X) OVERLAY PLAN SHEETS

91ST PL NE								
NUMBER	START STA	NORTHING	EASTING	LENGTH	BRNG/DELTA	RADIUS	PI STA	TAN
L12	10+00.00	234612.45	1298619.39	30.61'	N 35°56'58" E			
C10	10+30.61	234637.23	1298637.36	59.95'	34°21'06"	100.00'	10+61.52	30.91'
L13	10+90.56	234693.14	1298656.37	259.44'	N 1°35'52" E			

NE 15TH ST								
NUMBER	START STA	NORTHING	EASTING	LENGTH	BRNG/DELTA	RADIUS	PI STA	TAN
L2	20+00.00	230591.91	1300657.19	298.02'	S 89°37'09" E			
C1	22+98.02	230589.93	1300955.21	27.66'	9°32'47"	166.03'	23+11.89	13.86'
L3	23+25.69	230592.05	1300982.76	24.31'	N 80°50'04" E			

NE 25TH PL								
NUMBER	START STA	NORTHING	EASTING	LENGTH	BRNG/DELTA	RADIUS	PI STA	TAN
L10	40+00.00	233593.72	1298581.43	175.73'	N 0°53'17" E			
C11	41+75.73	233769.43	1298584.15	117.51'	89°46'16"	75.00'	42+50.44	74.70'
L11	42+93.24	233843.26	1298660.01	256.76'	S 89°20'27" E			

NE 31ST ST								
NUMBER	START STA	NORTHING	EASTING	LENGTH	BRNG/DELTA	RADIUS	PI STA	TAN
L8	30+00.00	235891.84	1300455.24	336.78'	S 89°21'40" E			
L9	33+36.78	235888.09	1300792.00	313.22'	S 88°22'02" E			



NO.	DATE	BY	APPR.	REVISIONS

Approved By		21015W6INDX.dwg
ENGINEERING MANAGER	DATE	JLA 12/21
PROJECT MANAGER	DATE	JLA 12/21
PROJECT ENGINEER	DATE	SOD 12/21
	CHECKED BY	



KPG
Interdisciplinary Design
SEATTLE
3131 Elliott Ave
Suite 400 WA 98121
(206) 286 1640
www.kpg.com

Tacoma
Wenatchee

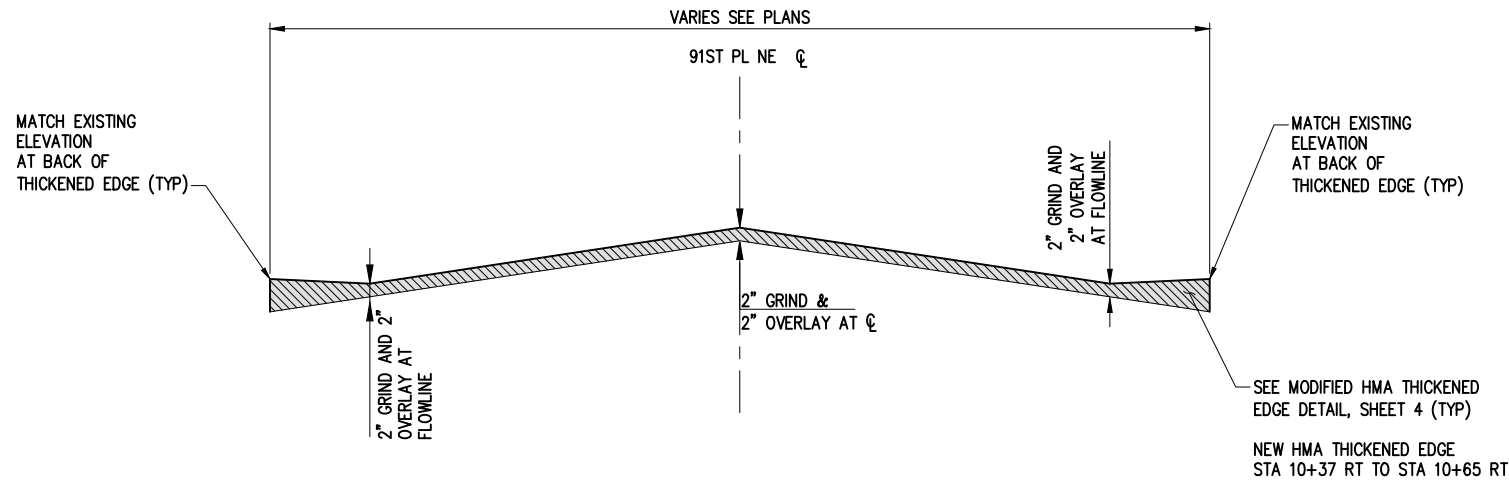
**BID
DOCUMENT**



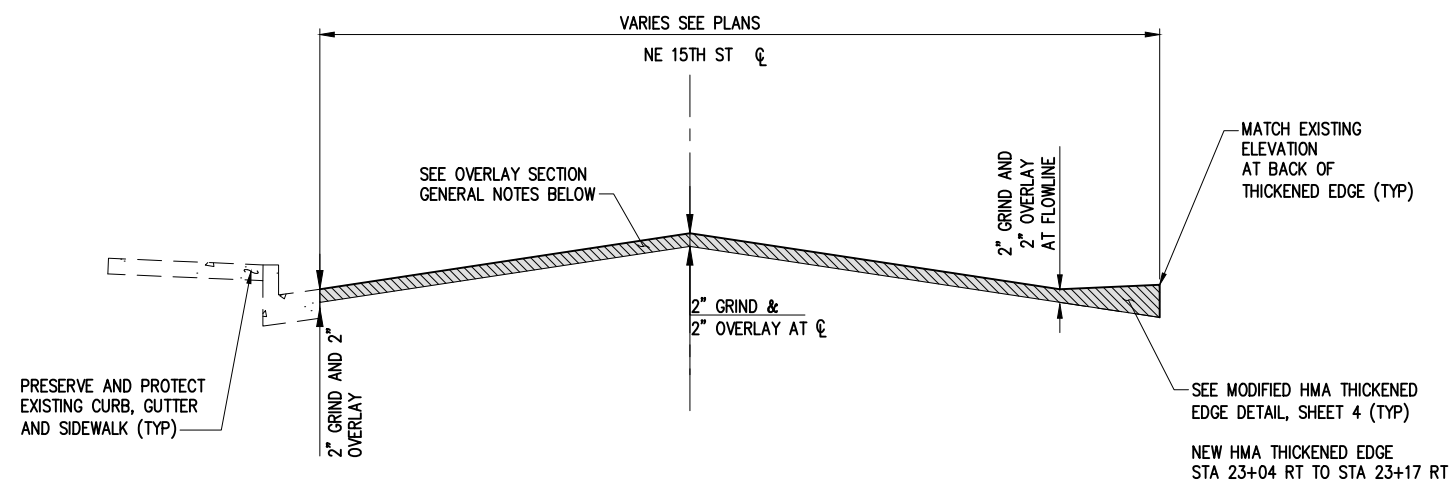
**CITY OF CLYDE HILL
2022 OVERLAY PROGRAM**

**ALIGNMENT INFORMATION
AND SHEET INDEX**

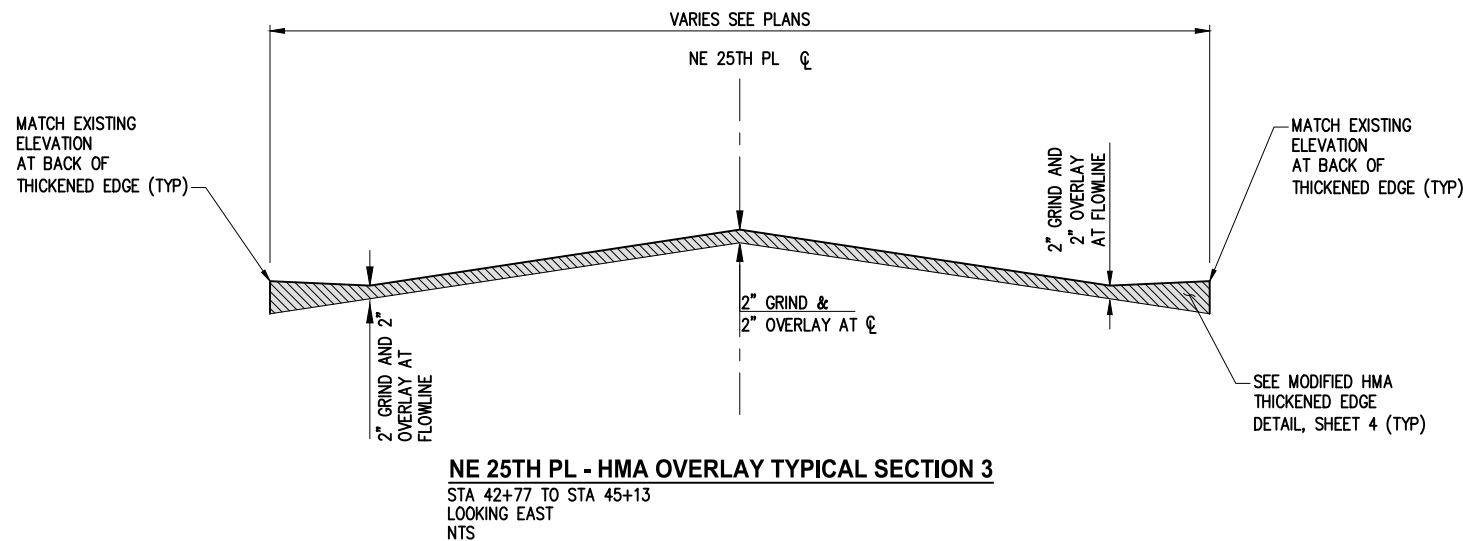
K:\PROJECTS\CLYDE HILL\21015-0n-Call Services\21015W6-2022 Overlay\DESIGN\Drawings\Contract\21015W6DET.dwg 1/24/2022 1:15 PM



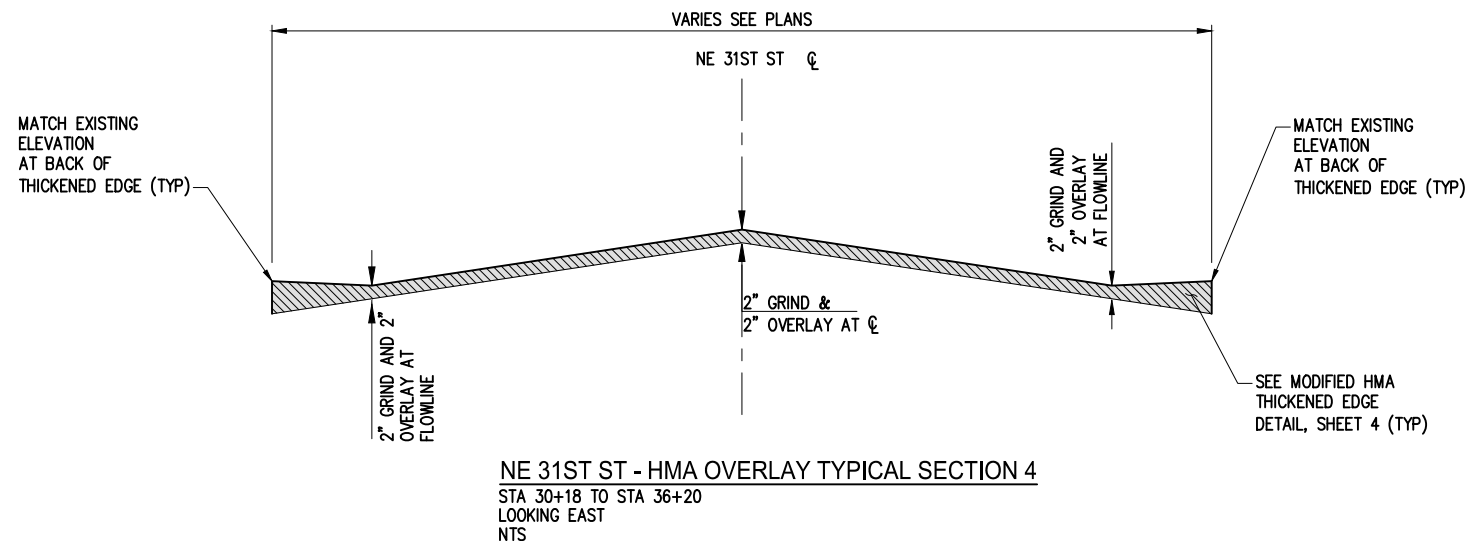
91ST PL NE - HMA OVERLAY TYPICAL SECTION 1
STA 10+00 TO STA 12+95
LOOKING NORTH
NTS



NE 15TH ST - HMA OVERLAY TYPICAL SECTION 2
STA 20+30 TO STA 23+18
LOOKING EAST
NTS



NE 25TH PL - HMA OVERLAY TYPICAL SECTION 3
STA 42+77 TO STA 45+13
LOOKING EAST
NTS



NE 31ST ST - HMA OVERLAY TYPICAL SECTION 4
STA 30+18 TO STA 36+20
LOOKING EAST
NTS

OVERLAY SECTION GENERAL NOTES:

1. AFTER PLANING (GRINDING) OPERATIONS, THE CONTRACTOR SHALL INSTALL A SELF ADHESIVE PAVING MEMBRANE (PETROTAC OR APPROVED EQUAL) PER MANUFACTURER'S RECOMMENDATIONS AT LOCATIONS FIELD MARKED BY THE ENGINEER OR INSPECTOR PRIOR TO PERFORMING FINAL PAVING OPERATIONS.
2. SEAL ALL JOINTS AND BROOM FINISH.
3. ADJUST THICKENED EDGE AS NECESSARY TO TRANSITION INTO AND OUT OF EXISTING DRIVEWAY CUTS.

OVERLAY SECTION GENERAL NOTES CONT'D:

4. NE 15 ST - PAVING FABRIC EXISTS AT APPROXIMATELY 2" BELOW EXISTING GROUND SURFACE. PAVING FABRIC SHALL BE COMPLETELY REMOVED DURING PLANING OPERATIONS.
5. NE 31ST ST - PAVING FABRIC EXISTS AND VARIES APPROXIMATELY 1.25" TO 2" BELOW EXISTING GROUND SURFACE. PAVING FABRIC SHALL BE COMPLETELY REMOVED DURING PLANING OPERATIONS.
6. NE 91ST PL & NE 25TH PL - CORING HAS NOT BEEN COMPLETED. IF CONTRACTOR ENCOUNTERS PAVING FABRIC AT 2" BELOW EXISTING GROUND SURFACE OR LESS, IT SHALL BE COMPLETELY REMOVED DURING PLANING OPERATIONS.

NO.	DATE	BY	APPR.	REVISIONS

Approved By		21015W6DET.dwg
ENGINEERING MANAGER	DATE	FILENAME
PROJECT MANAGER	DATE	JLA
PROJECT ENGINEER	DATE	DESIGNED BY
		JLA
		DRAWN BY
		SOD
		CHECKED BY
		DATE



**BID
DOCUMENT**



**CITY OF CLYDE HILL
2022 OVERLAY PROGRAM**


















OVERLAY TYPICAL SECTIONS

KPG PROJECT No. 21015W6 SHT 3 OF 8











ABBREVIATIONS

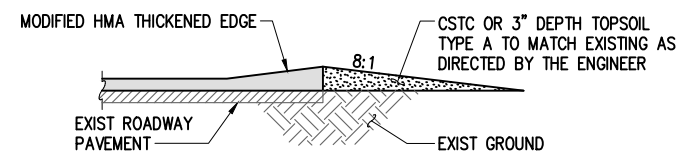
AC	ASPHALT CONCRETE	L	LENGTH
ADA	AMERICANS WITH DISABILITIES ACT	LT	LEFT
AP	ANGLE POINT	LF	LINEAR FEET
AVE	AVENUE	LP	LOW POINT
APPROX	APPROXIMATE	MAX	MAXIMUM
BLDG	BUILDING	MIN	MINIMUM
BRNG	BEARING	MH	MANHOLE
CB	CATCH BASIN	MIC	MONUMENT IN CASE
CCP	CEMENT CONCRETE PAVEMENT	MJ	MECHANICAL JOINT
CDF	CONTROLLED DENSITY FILL	MON	MONUMENT
CL	CENTERLINE	N	NORTH OR NORTHING
CL	CLASS	NAVD	NORTH AMERICAN VERTICAL DATUM
CO	CLEANOUT	NE	NORTHEAST
COCH	CITY OF CLYDE HILL	NO	NUMBER
CSBC	CRUSHED SURFACING BASE COURSE	NTS	NOT TO SCALE
CSTC	CRUSHED SURFACING TOP COURSE	OD	OUTSIDE DIAMETER
DI	DUCTILE IRON	PC	POINT OF CURVE
DIA	DIAMETER	PI	POINT OF INTERSECTION
DW	DRIVEWAY	PL	PLACE
E	EAST OR EASTING	PT	POINT OF TANGENT
EA	EACH	PVC	POLYVINYL CHLORIDE
ELEV	ELEVATION	R	RADIUS
EOP	EDGE OF PAVEMENT	ROW	RIGHT OF WAY
EW	EACH WAY	RPM	RAISED PAVEMENT MARKERS
EXIST	EXISTING	RT	RIGHT
FL	FLOW LINE	S	SOUTH
FOC	FACE OF CURB	SD	STORM DRAIN
HMA	HOT MIX ASPHALT	SDMH	STORM DRAIN MANHOLE
HORIZ	HORIZONTAL	SE	SOUTHEAST
ID	INSIDE DIAMETER	SHT	SHEET
IE	INVERT ELEVATION	ST	STREET
IN	INCH/INCHES	STA	STATION
JB	JUNCTION BOX	STD	STANDARD
		SW	SOUTHWEST
		TYP	TYPICAL

EXISTING SYMBOLS

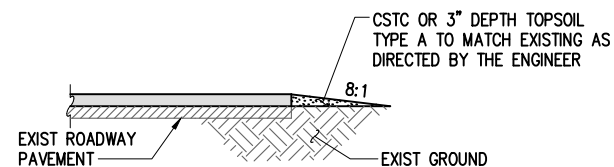
	MONUMENT IN CASE		GAS VALVE
	CATCH BASIN		WATER VALVE
	STORM DRAIN MANHOLE		WATER METER
	STORM DRAIN CLEAN-OUT		FIRE HYDRANT
	SEWER MANHOLE		UTILITY VAULT LID (GENERIC/UNKNOWN)
	POWER POLE		SIGN
	STREET LIGHT (LUMINAIRE)		MAILBOX
	DETECTABLE WARNING SURFACE		SHRUB
			CONIFEROUS TREE

EXISTING LEGEND

	BUILDING		WATER
	EDGE OF PAVEMENT		GAS
	EXISTING RIGHT-OF-WAY LINE		STORM
	PROPERTY LINE		SEWER
	ROADWAY CENTERLINE		
	HEDGE		



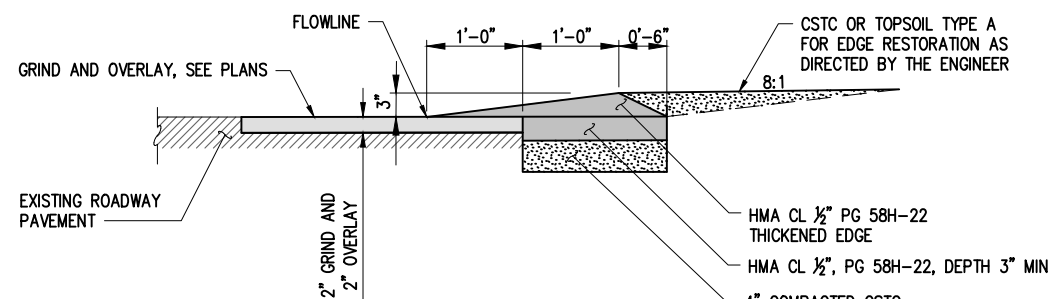
WITH MODIFIED HMA THICKENED EDGE



WITHOUT MODIFIED HMA THICKENED EDGE

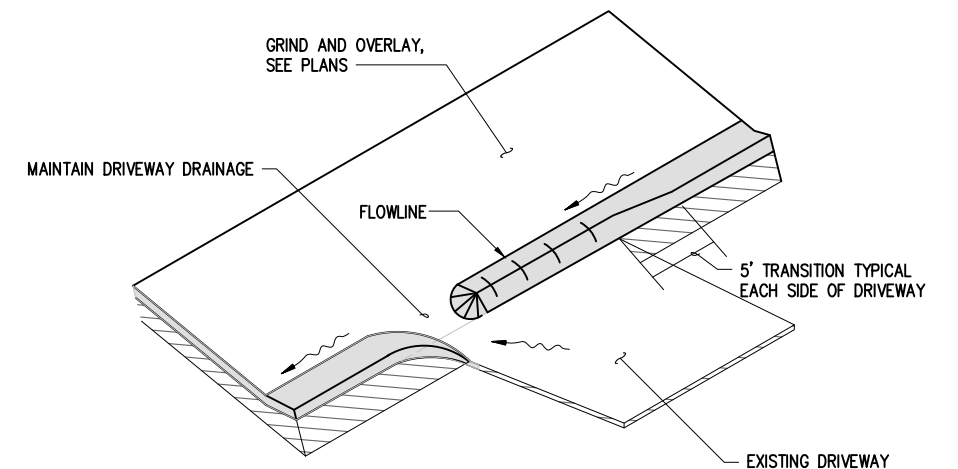
EDGE RESTORATION DETAIL

NTS

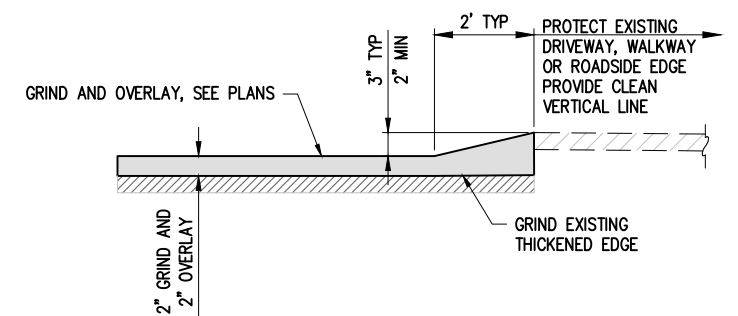


NEW HMA THICKENED EDGE DETAIL

NTS



ISOMETRIC VIEW AT DRIVEWAY - TYPE A



SECTION VIEW – TYPE A

NOTES:

1. THE EXISTING THICKENED EDGE SHALL BE GROUND DOWN AND REMOVED. WHILE PAVING THE CONTRACTOR SHALL INSTALL NEW THICKENED EDGE THAT SHALL MATCH THE EXISTING FLOWLINE LOCATION. AFTER THE PAVING OPERATION IS COMPLETE, THE CONTRACTOR SHALL INFORM THE ENGINEER OF ANY CHANGES OR DEVIATIONS FROM THE EXISTING FLOWLINE.
2. PRESERVE AND PROTECT ALL CONCRETE, BRICK & ASPHALT DRIVEWAYS/WALKWAYS WHEN GRINDING AND OVERLAYING. CONTRACTOR SHALL BE RESPONSIBLE FOR CHIPPED BROKEN OR DISTURBED DRIVEWAYS.
3. THE CONTRACTOR SHALL INSTALL AND MAINTAIN TEMPORARY PAVEMENT AT ALL DRIVEWAYS IMMEDIATELY FOLLOWING PAVING OPERATIONS AND SHALL BE SHALL BE REMOVED PRIOR TO FINAL PAVING.

MODIFIED HMA THICKENED EDGE DETAIL

NTS

NO.	DATE	BY	APPR.	REVISIONS	Approved By		21015W6DET.dwg
							FILENAME
							JLA
					ENGINEERING MANAGER	DATE	DESIGNED BY
							JLA
					PROJECT MANAGER	DATE	DRAWN BY
							SOD
					PROJECT ENGINEER	DATE	CHECKED BY
							DATE



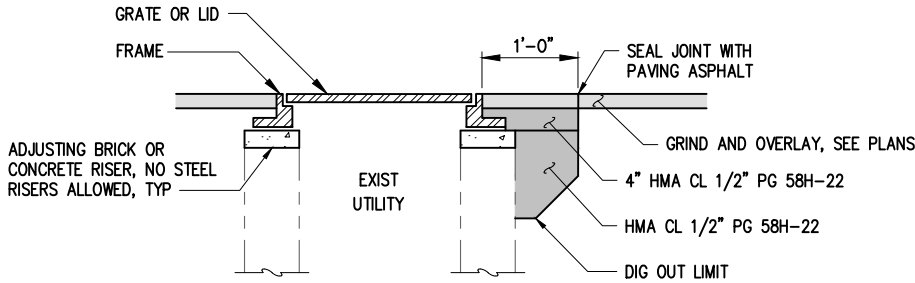
BID DOCUMENT



CITY OF CLYDE HILL
2022 OVERLAY PROGRAM

LEGEND, ABBREVIATIONS, AND TYPICAL DETAILS

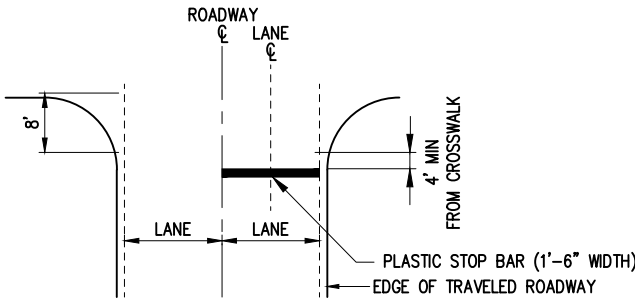
K:\PROJECTS\CLYDE HILL\21015-Overlay\Drawings\Contract\21015W6DET.dwg 1/24/2022 1:15 PM



UTILITY LID ADJUSTMENT NOTES:

1. PRESERVE AND PROTECT UTILITY LID ELEVATIONS DURING GRINDING AND OVERLAY. AS DEEMED NECESSARY, PAYMENT FOR ADJUSTMENTS SHALL BE COUNTED ONCE (1) PER CASTING FOR FINAL ADJUSTMENT AND SHALL INCLUDE ALL INTERIM ADJUSTMENTS IF NECESSARY.
2. CONCRETE PERIMETER SHALL EXTEND 2" BELOW ADJUSTMENT RINGS.
3. SEE SPECIAL PROVISIONS.

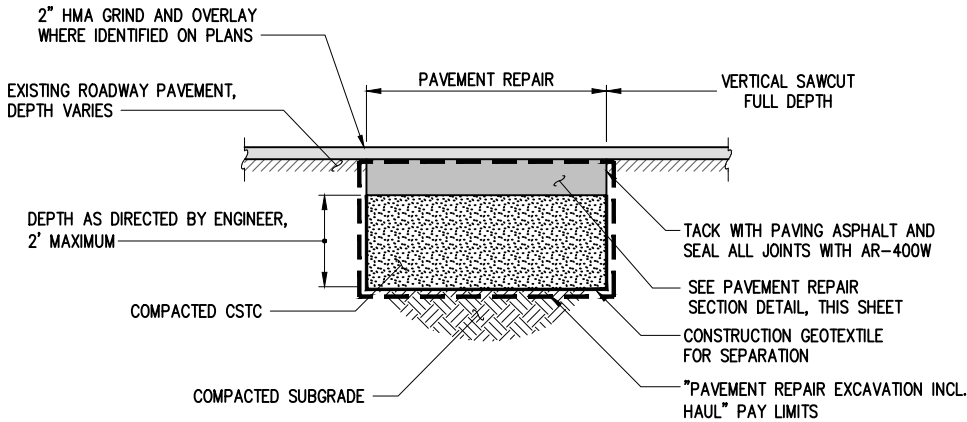
UTILITY LID ADJUSTMENT (OR REPLACEMENT) DETAIL (AS NECESSARY)
NTS



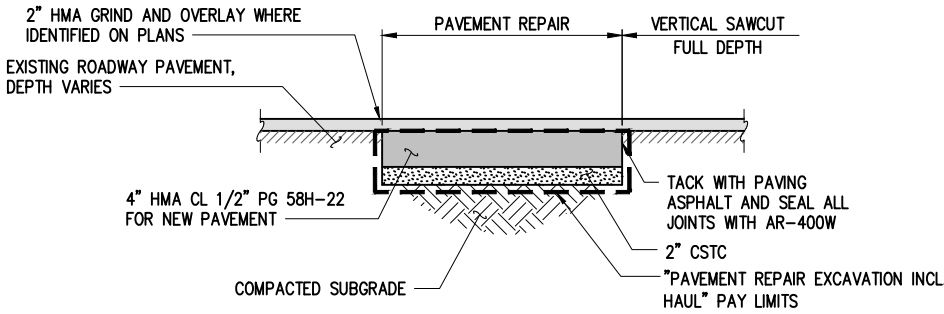
CROSSWALK LINE AND STOP BAR NOTES:

1. IF NO CROSSWALK EXISTS, EDGE OF STOP BAR SHALL NOT BE PLACED CLOSER THAN 4' FROM THE NEAREST EDGE OF THE INTERSECTING TRAVELED WAY.

STOP BAR PLACEMENT DETAIL
NTS



UNSUITABLE FOUNDATION EXCAVATION DETAIL
NTS



PAVEMENT REPAIR SECTION DETAIL
NTS

NO.	DATE	BY	APPR.	REVISIONS

Approved By		21015W6DET.dwg
ENGINEERING MANAGER	DATE	JLA 12/21
PROJECT MANAGER	DATE	JLA 12/21
PROJECT ENGINEER	DATE	SOD 12/21
	CHECKED BY	



KPG
Interdisciplinary Design
SEATTLE
3131 Elliott Ave
Suite 400 WA 98121
(206) 286 1640
www.kpg.com

Tacoma
Wenatchee
www.kpg.com

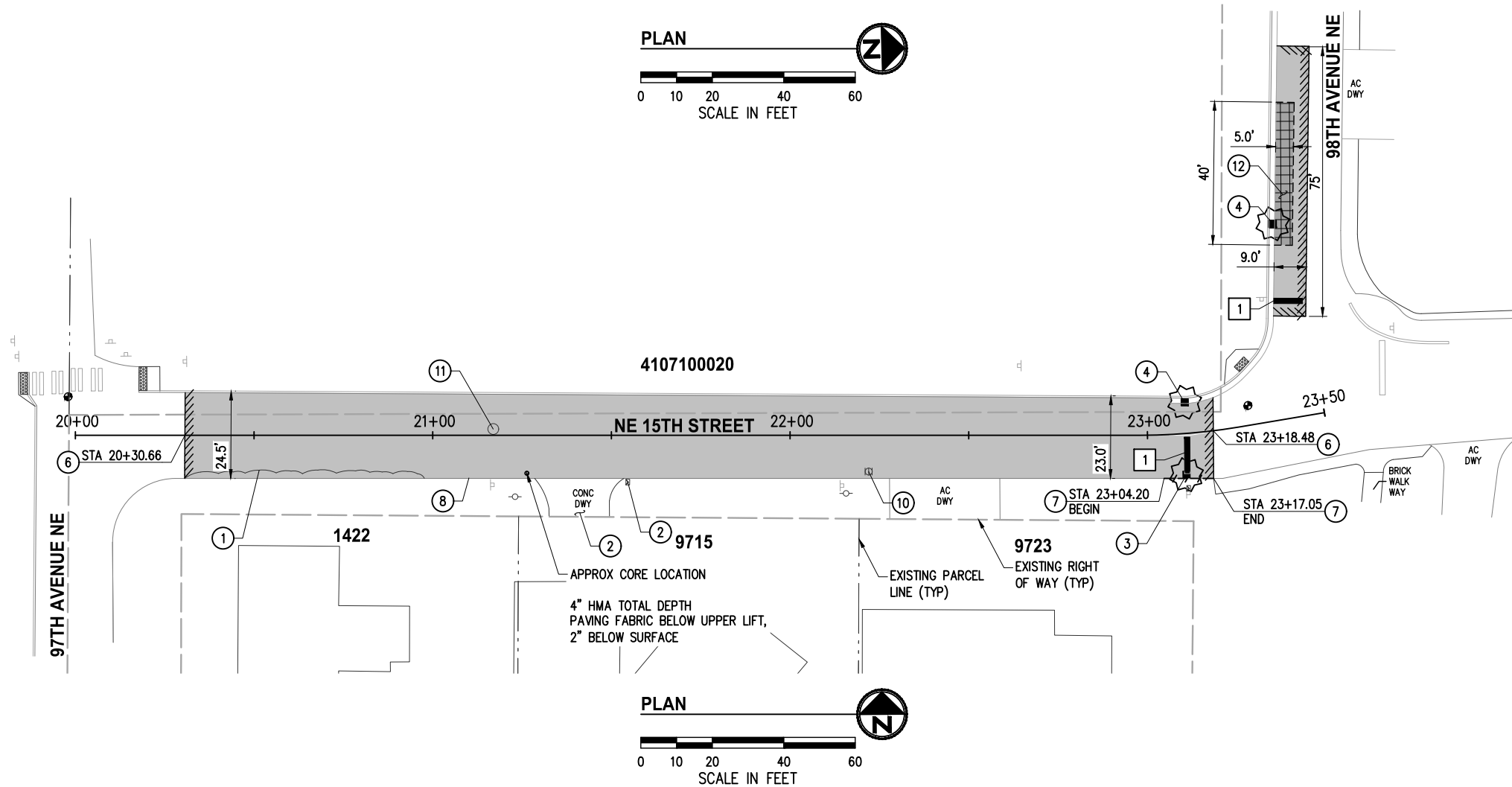
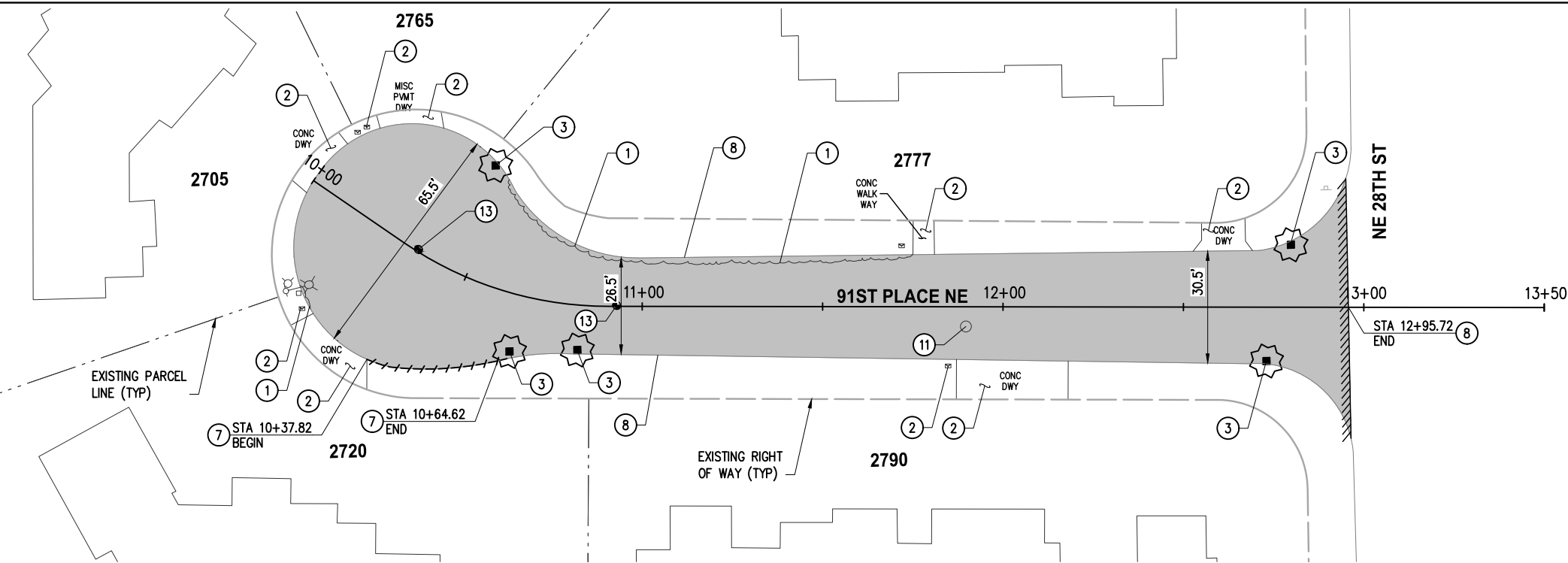
BID
DOCUMENT



CITY OF CLYDE HILL
2022 OVERLAY PROGRAM

TYPICAL DETAILS

K:\PROJECTS\CLYDE HILL\21015-06-Overlay\Drawings\Contract\21015W6RDW.dwg 1/24/2022 1:17 PM



GENERAL NOTES

1. PROTECT AND MAINTAIN ALL UTILITY LID AND MONUMENT ELEVATIONS DURING PLANING AND OVERLAY OPERATIONS.
2. EDGE RESTORATION PER DETAIL, SHEET 4 AS NECESSARY.
3. ALL JOINT SEALANT SHALL BE BROOMED FINISHED.
4. PROTECT ALL SURFACE FEATURES INCLUDING LANDSCAPING ON PROPERTY BEHIND THICKENED EDGE.
5. PLACE ONE BLUE TYPE 2 RAISED PAVEMENT MARKER AT EACH FIRE HYDRANT LOCATION PER WSDOT STD SPECIFICATION 8-09.1.
6. REMOVE PAVEMENT MARKINGS PRIOR TO OVERLAY. REPLACE PAVEMENT MARKINGS AS SHOWN ON PLANS PER WSDOT STD SPECIFICATIONS 8-09 AND 8-22. ALL REMOVAL AND REPLACEMENT OF PAVEMENT MARKINGS SHALL BE CONSIDERED INCIDENTAL TO VARIOUS BID ITEMS UNLESS OTHERWISE NOTED.
7. INSTALL INLET PROTECTION ON ALL EXISTING DRAINAGE STRUCTURES WITHIN THE PROJECT LIMITS PER WSDOT STD PLAN I-40.20.
8. PRESERVE AND PROTECT ALL CONCRETE/BRICK DRIVEWAYS AND CONCRETE/BRICK DRIVEWAY EDGES. CONTRACTOR SHALL BE RESPONSIBLE FOR DAMAGE TO THEM.
9. PLANING AND OVERLAY LIMITS TO BE MARKED IN THE FIELD AND VERIFIED BY CITY PRIOR TO PAVEMENT REMOVAL.

ROADWAY CONSTRUCTION NOTES

- 1 TRIM VEGETATION TO EXPOSE EDGE OF PAVEMENT. (BY CITY)
- 2 PRESERVE AND PROTECT.
- 3 REMOVE AND REPLACE CATCH BASIN GRATE WITH 18"x24" VANED GRATE PER OLYMPIC FOUNDRY PART # SM50VG, OR EQUAL. CONTRACTOR TO FIELD VERIFY GRATE SIZE PRIOR TO ORDERING MATERIALS.
- 4 PROTECT AND MAINTAIN CATCH BASIN GRATE ELEVATION DURING PLANING AND OVERLAY OPERATIONS. IF ADJUSTMENT IS DEEMED NECESSARY BY THE ENGINEER, SEE UTILITY ADJUSTMENT DETAIL, SHEET 5.
- 6 MATCH EXISTING.
- 7 CONSTRUCT NEW HMA THICKENED EDGE PER DETAIL, SHEET 4.
- 8 CONSTRUCT MODIFIED HMA THICKENED EDGE PER DETAIL, SHEET 4 ALONG EDGE OF PAVEMENT UNLESS OTHERWISE NOTED.
- 10 PROTECT AND MAINTAIN GAS VALVE LID DURING PLANING AND OVERLAY OPERATIONS. IF ADJUSTMENT IS DEEMED NECESSARY BY THE ENGINEER, COORDINATE WITH PSE UTILITY.
- 11 PROTECT AND MAINTAIN SEWER LID ELEVATION DURING PLANING AND OVERLAY OPERATIONS. IF ADJUSTMENT IS DEEMED NECESSARY BY THE ENGINEER, SEE UTILITY ADJUSTMENT DETAIL, SHEET 5.
- 12 REMOVE AND REPLACE SUBGRADE PER UNSUITABLE FOUNDATION EXCAVATION DETAIL, SHEET 5. LIMITS TO BE MARKED IN THE FIELD AND VERIFIED BY CITY PRIOR TO SUBGRADE REMOVAL.
- 13 PROTECT AND MAINTAIN MONUMENT CASE AND LID ELEVATION DURING PLANING AND OVERLAY OPERATIONS.

CHANNELIZATION CONSTRUCTION NOTES

- 1 INSTALL STOP BAR. SEE DETAIL, SHEET 5.

LEGEND

- XX+XX CONSTRUCTION CENTERLINE
- PROPOSED THICKENED EDGE LINE
- ////// PLANING LIMIT LINE
- SAWCUT LINE
- 2" PLANE AND 2" HMA OVERLAY CL 1/2" PG 58H-22
- NEW PAVEMENT
- PAVEMENT REPAIR
- INLET PROTECTION

NO.	DATE	BY	APPR.	REVISIONS

Approved By		21015W6RDW.dwg
ENGINEERING MANAGER	DATE	FILENAME
PROJECT MANAGER	DATE	JLA
PROJECT ENGINEER	DATE	DESIGNED BY
		JLA
		DRAWN BY
		SOD
		CHECKED BY
		DATE



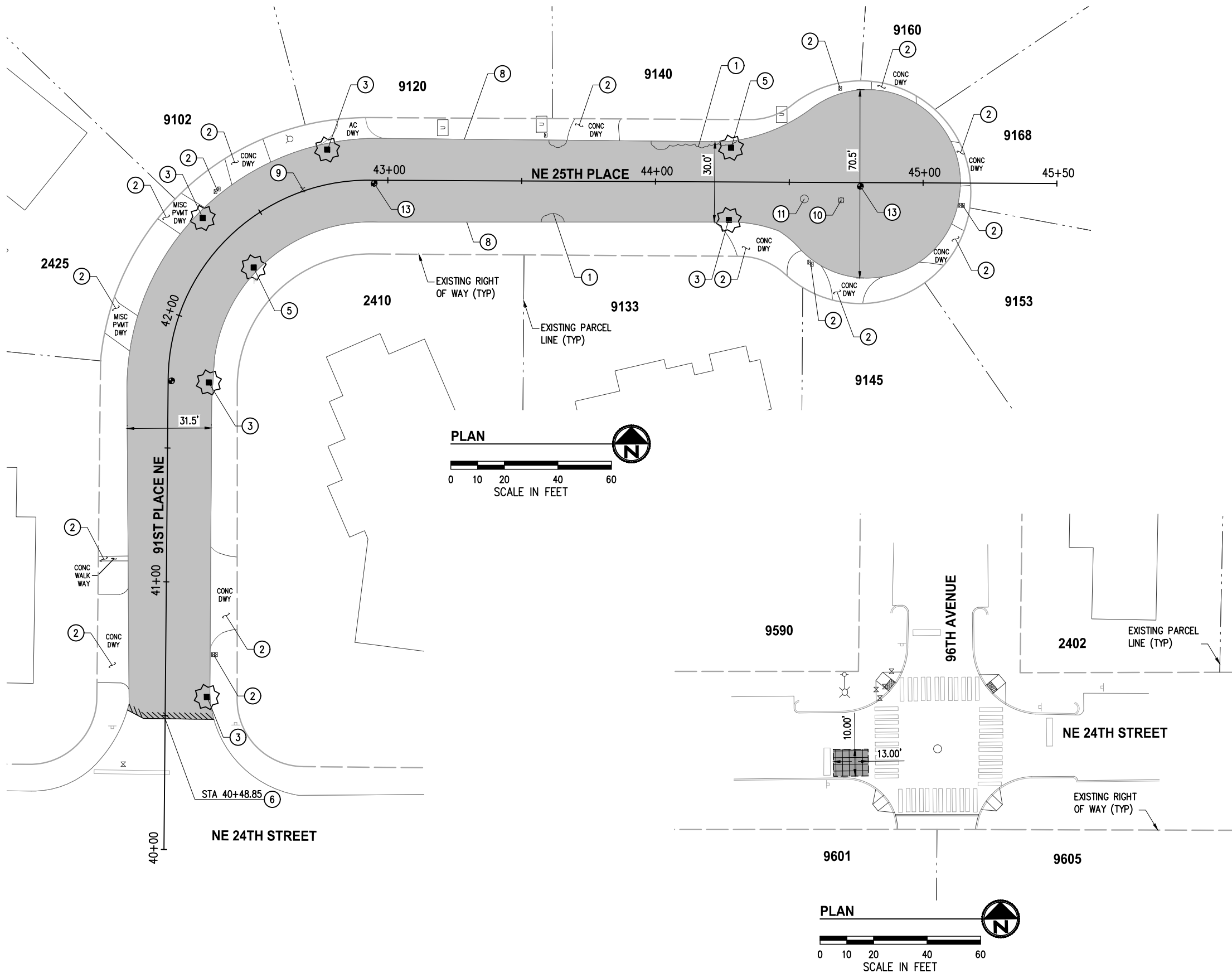
BID
DOCUMENT



CITY OF CLYDE HILL
2022 OVERLAY PROGRAM

OVERLAY PLANS		
91ST PL NE & NE 15TH ST & 98TH AVE NE		
STA 10+00 TO STA 13+50 & STA 20+00 TO STA 23+50		
KPG PROJECT No. 21015W6	SHT	6 OF 8

K:\PROJECTS\CLYDE HILL\21015-Overlay\Drawings\Contract\21015W6RDW.dwg 1/24/2022 1:17 PM



GENERAL NOTES

1. PROTECT AND MAINTAIN ALL UTILITY LID AND MONUMENT ELEVATIONS DURING PLANING AND OVERLAY OPERATIONS.
2. EDGE RESTORATION PER DETAIL, SHEET 4 AS NECESSARY.
3. ALL JOINT SEALANT SHALL BE BROOMED FINISHED.
4. PROTECT ALL SURFACE FEATURES INCLUDING LANDSCAPING ON PROPERTY BEHIND THICKENED EDGE.
5. PLACE ONE BLUE TYPE 2 RAISED PAVEMENT MARKER AT EACH FIRE HYDRANT LOCATION PER WSDOT STD SPECIFICATION 8-09.1.
6. REMOVE PAVEMENT MARKINGS PRIOR TO OVERLAY. REPLACE PAVEMENT MARKINGS AS SHOWN ON PLANS PER WSDOT STD SPECIFICATIONS 8-09 AND 8-22. ALL REMOVAL AND REPLACEMENT OF PAVEMENT MARKINGS SHALL BE CONSIDERED INCIDENTAL TO VARIOUS BID ITEMS UNLESS OTHERWISE NOTED.
7. INSTALL INLET PROTECTION ON ALL EXISTING DRAINAGE STRUCTURES WITHIN THE PROJECT LIMITS PER WSDOT STD PLAN I-40.20.
8. PRESERVE AND PROTECT ALL CONCRETE/BRICK DRIVEWAYS AND CONCRETE/BRICK DRIVEWAY EDGES. CONTRACTOR SHALL BE RESPONSIBLE FOR DAMAGE TO THEM.
9. PLANING AND OVERLAY LIMITS TO BE MARKED IN THE FIELD AND VERIFIED BY CITY PRIOR TO PAVEMENT REMOVAL.

ROADWAY CONSTRUCTION NOTES

- 1 TRIM VEGETATION TO EXPOSE EDGE OF PAVEMENT. (BY CITY)
- 2 PRESERVE AND PROTECT.
- 3 REMOVE AND REPLACE CATCH BASIN GRATE WITH 18"x24" VANED GRATE PER OLYMPIC FOUNDRY PART # SM50VG, OR EQUAL. CONTRACTOR TO FIELD VERIFY GRATE SIZE PRIOR TO ORDERING MATERIALS.
- 5 REMOVE AND REPLACE CATCH BASIN GRATE WITH VANED GRATE PER WSDOT STD PLAN B-30.30. CONTRACTOR TO FIELD VERIFY GRATE SIZE PRIOR TO ORDERING MATERIALS.
- 6 MATCH EXISTING.
- 8 CONSTRUCT MODIFIED HMA THICKENED EDGE PER DETAIL, SHEET 4 ALONG EDGE OF PAVEMENT UNLESS OTHERWISE NOTED.
- 9 PROTECT AND MAINTAIN WATER VALVE LID ELEVATION DURING PLANING AND OVERLAY OPERATIONS. IF ADJUSTMENT IS DEEMED NECESSARY BY THE ENGINEER, SEE CITY OF BELLEVUE VALVE BOX INSTALLATION DETAIL W-11.
- 10 PROTECT AND MAINTAIN GAS VALVE LID DURING PLANING AND OVERLAY OPERATIONS. IF ADJUSTMENT IS DEEMED NECESSARY BY THE ENGINEER, COORDINATE WITH PSE UTILITY.
- 11 PROTECT AND MAINTAIN SEWER LID ELEVATION DURING PLANING AND OVERLAY OPERATIONS. IF ADJUSTMENT IS DEEMED NECESSARY BY THE ENGINEER, SEE UTILITY ADJUSTMENT DETAIL, SHEET 5.
- 13 PROTECT AND MAINTAIN MONUMENT CASE AND LID ELEVATION DURING PLANING AND OVERLAY OPERATIONS.

CHANNELIZATION CONSTRUCTION NOTES

- 1 INSTALL STOP BAR. SEE DETAIL, SHEET 5.

LEGEND

- XX+XX
+ CONSTRUCTION CENTERLINE
- PROPOSED THICKENED EDGE LINE
- ////// PLANING LIMIT LINE
- SAWCUT LINE
- 2" PLANE AND 2" HMA OVERLAY CL 1/2" PG 58H-22
- NEW PAVEMENT
- PAVEMENT REPAIR
- INLET PROTECTION

NO.	DATE	BY	APPR.	REVISIONS

Approved By		21015W6RDW.dwg
ENGINEERING MANAGER	DATE	JLA
PROJECT MANAGER	DATE	DESIGNED BY
PROJECT ENGINEER	DATE	JLA
		DRAWN BY
		SOD
		CHECKED BY
		DATE



KPG
Interdisciplinary Design
SEATTLE
3131 Elliott Ave
Suite 400 WA 98121
(206) 286 1640
www.kpg.com

**BID
DOCUMENT**

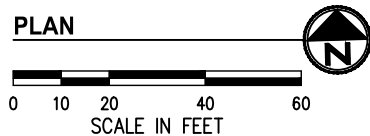
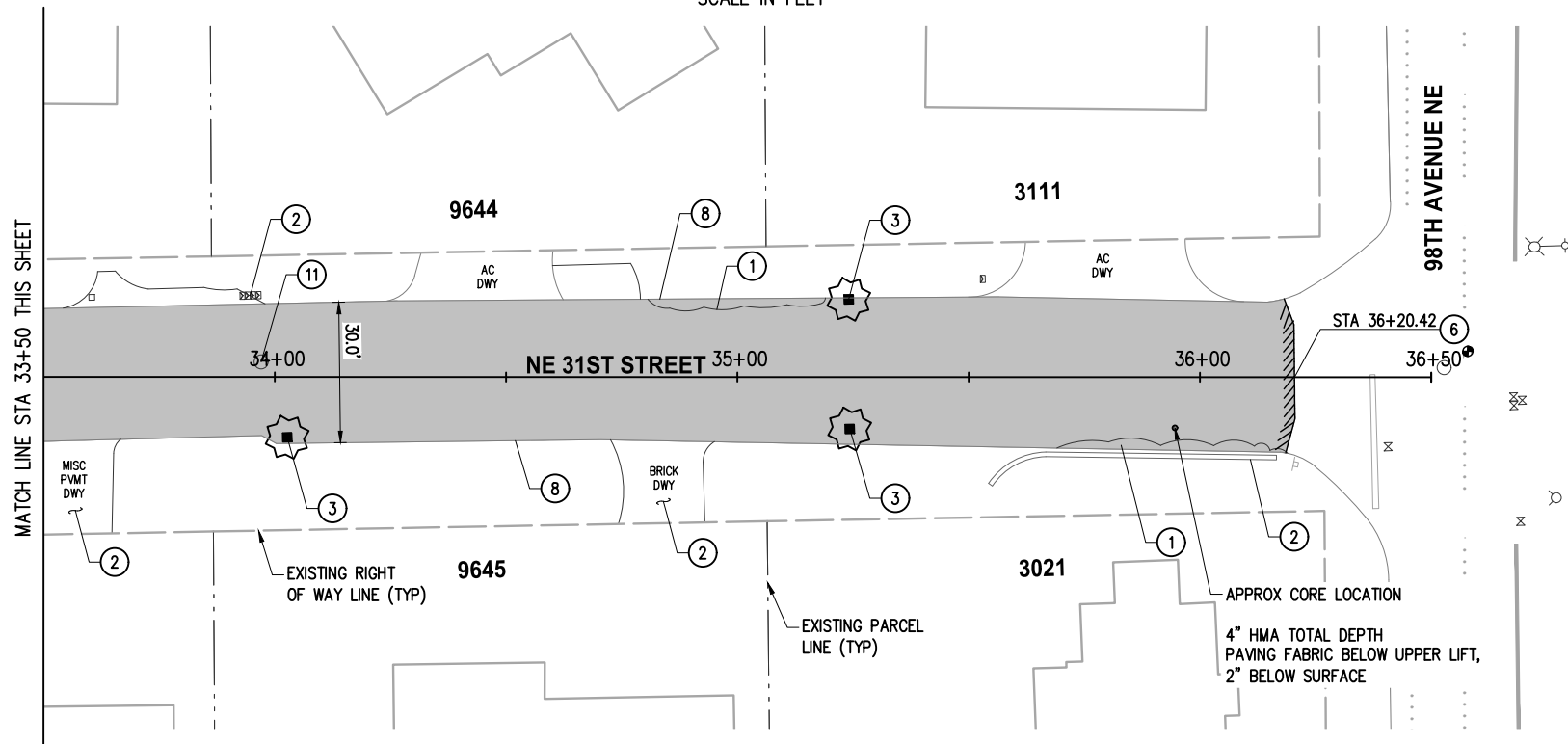
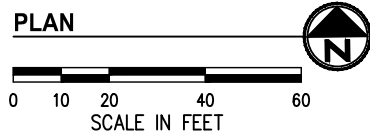
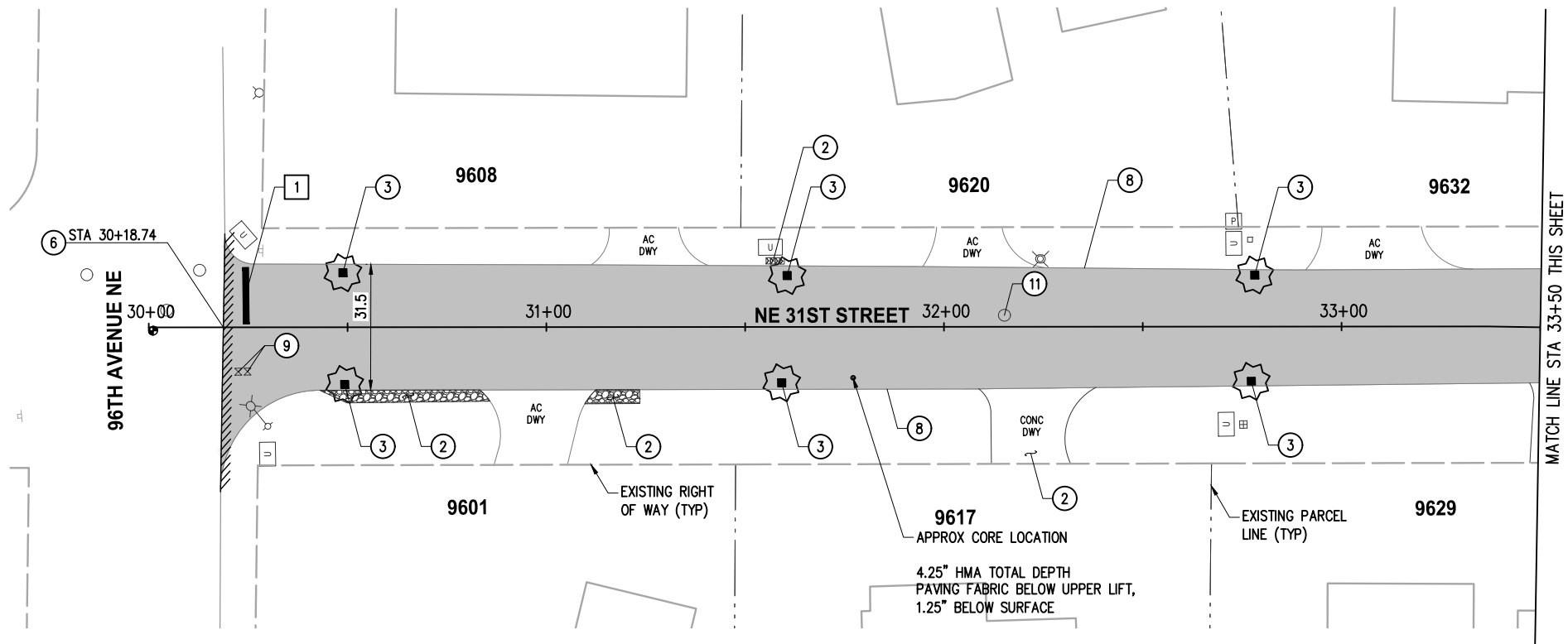


**CITY OF CLYDE HILL
2022 OVERLAY PROGRAM**

**OVERLAY PLANS
NE 25TH PLACE & NE 24TH STREET
STA 40+00 TO STA 45+50**

KPG PROJECT No. 21015W6 SHT 7 OF 8

K:\PROJECTS\CLYDE HILL\21015W6-2022 Overlay\DESIGN\Drawings\Contract\21015W6RDW.dwg 1/24/2022 1:17 PM



GENERAL NOTES

1. PROTECT AND MAINTAIN ALL UTILITY LID AND MONUMENT ELEVATIONS DURING PLANING AND OVERLAY OPERATIONS.
2. EDGE RESTORATION PER DETAIL, SHEET 4 AS NECESSARY.
3. ALL JOINT SEALANT SHALL BE BROOMED FINISHED.
4. PROTECT ALL SURFACE FEATURES INCLUDING LANDSCAPING ON PROPERTY BEHIND THICKENED EDGE.
5. PLACE ONE BLUE TYPE 2 RAISED PAVEMENT MARKER AT EACH FIRE HYDRANT LOCATION PER WSDOT STD SPECIFICATION 8-09.1.
6. REMOVE PAVEMENT MARKINGS PRIOR TO OVERLAY. REPLACE PAVEMENT MARKINGS AS SHOWN ON PLANS PER WSDOT STD SPECIFICATIONS 8-09 AND 8-22. ALL REMOVAL AND REPLACEMENT OF PAVEMENT MARKINGS SHALL BE CONSIDERED INCIDENTAL TO VARIOUS BID ITEMS UNLESS OTHERWISE NOTED.
7. INSTALL INLET PROTECTION ON ALL EXISTING DRAINAGE STRUCTURES WITHIN THE PROJECT LIMITS PER WSDOT STD PLAN I-40.20.
8. PRESERVE AND PROTECT ALL CONCRETE/BRICK DRIVEWAYS AND CONCRETE/BRICK DRIVEWAY EDGES. CONTRACTOR SHALL BE RESPONSIBLE FOR DAMAGE TO THEM.
9. PLANING AND OVERLAY LIMITS TO BE MARKED IN THE FIELD AND VERIFIED BY CITY PRIOR TO PAVEMENT REMOVAL.

ROADWAY CONSTRUCTION NOTES

- 1 TRIM VEGETATION TO EXPOSE EDGE OF PAVEMENT. (BY CITY)
- 2 PRESERVE AND PROTECT.
- 3 REMOVE AND REPLACE CATCH BASIN GRATE WITH 18"x24" VANED GRATE PER OLYMPIC FOUNDRY PART # SM50VG, OR EQUAL. CONTRACTOR TO FIELD VERIFY GRATE SIZE PRIOR TO ORDERING MATERIALS.
- 6 MATCH EXISTING.
- 8 CONSTRUCT MODIFIED HMA THICKENED EDGE PER DETAIL, SHEET 4 ALONG EDGE OF PAVEMENT UNLESS OTHERWISE NOTED.
- 9 PROTECT AND MAINTAIN WATER VALVE LID ELEVATION DURING PLANING AND OVERLAY OPERATIONS. IF ADJUSTMENT IS DEEMED NECESSARY BY THE ENGINEER, SEE CITY OF BELLEVUE VALVE BOX INSTALLATION DETAIL W-11.
- 11 PROTECT AND MAINTAIN SEWER LID ELEVATION DURING PLANING AND OVERLAY OPERATIONS. IF ADJUSTMENT IS DEEMED NECESSARY BY THE ENGINEER, SEE UTILITY ADJUSTMENT DETAIL, SHEET 5.

CHANNELIZATION CONSTRUCTION NOTES

- 1 INSTALL STOP BAR. SEE DETAIL, SHEET 5.

LEGEND

- XX+XX
+ CONSTRUCTION CENTERLINE
- PROPOSED THICKENED EDGE LINE
- ////// PLANING LIMIT LINE
- SAWCUT LINE
- 2" PLANE AND 2" HMA OVERLAY CL 1/2" PG 58H-22
- NEW PAVEMENT
- PAVEMENT REPAIR
- INLET PROTECTION

NO.	DATE	BY	APPR.	REVISIONS

Approved By		21015W6RDW.dwg
ENGINEERING MANAGER	DATE	FILENAME
PROJECT MANAGER	DATE	JLA
PROJECT ENGINEER	DATE	DESIGNED BY
		JLA
		DRAWN BY
		SOD
		CHECKED BY
		DATE



KPG
Interdisciplinary Design
SEATTLE
3131 Elliott Ave
Suite 400 WA 98121
(206) 286 1640
www.kpg.com

**BID
DOCUMENT**



**CITY OF CLYDE HILL
2022 OVERLAY PROGRAM**

**OVERLAY PLANS
NE 31ST STREET
STA 30+00 TO STA 36+50**

KPG PROJECT No. 21015W6 SHT 8 OF 8