

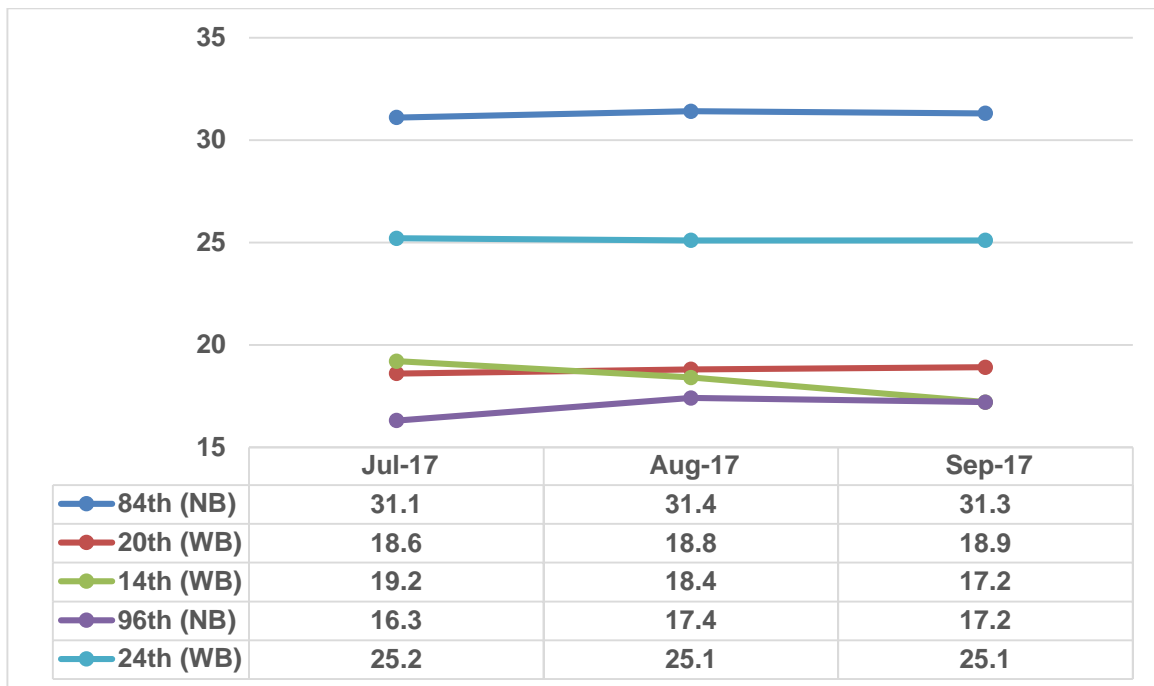


9605 NE 24<sup>th</sup> Street • Clyde Hill, Washington 98004  
425-453-7800 • Fax: 425-462-1936 • www.clydehill.org

**TO: Mayor and Council**  
**FROM: John Greenwood**  
**DATE: October 5, 2017**  
**RE: Quarterly Traffic Report – Q3 2017**

**Monthly Speeds:**

During the past three months, all ten speed radar signs registered average speeds below the posted speed limit. The one minor exception was on 24<sup>th</sup> where the average speed was a smidgen above that.



*Figure 1. Monthly Average Speeds: Jul-17 to Sep-17.*

*Note: 84<sup>th</sup> has a posted speed limit of 35 MPH; all other locations are 25 MPH.*

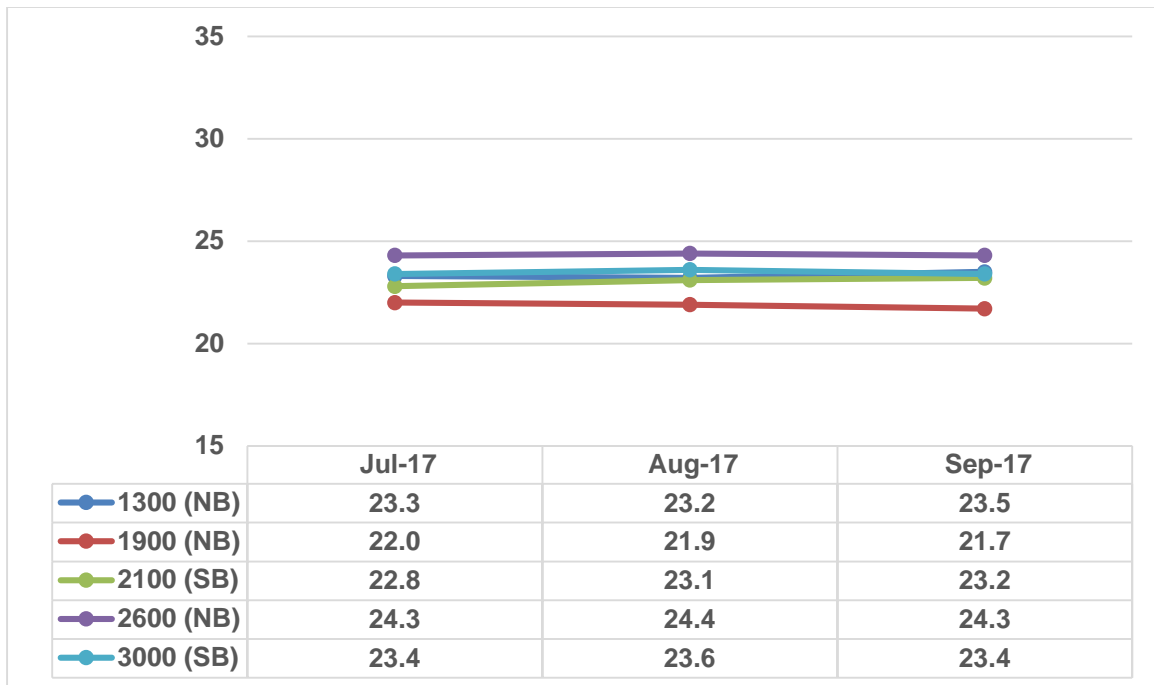


Figure 2. Monthly Average Speeds (92nd Ave): Jul-17 to Sep-17.

### **Comparison of Quarterly Average Speeds:**

As a result of only being able to collect one month of data for Q2 2017 (the beginning of this program), this quarter's average speeds are being compared to the historic average speeds. The comparison of these two sets indicates that the average speeds have dropped noticeably in all instances, with the exception of one.

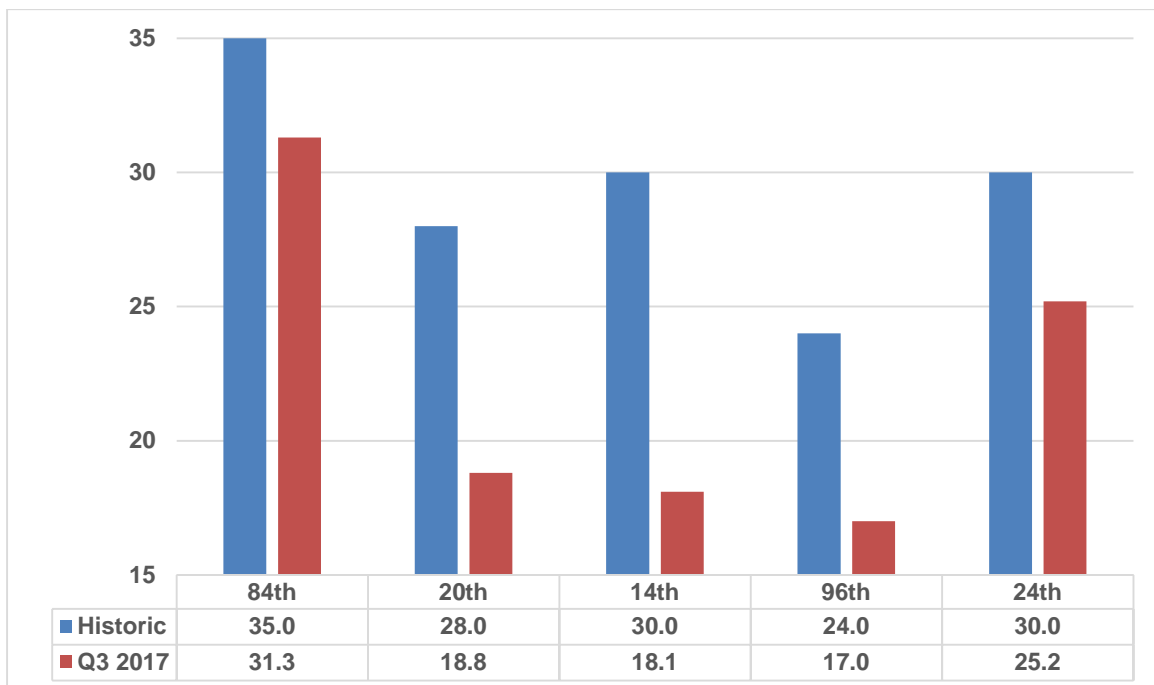


Figure 3. Comparison of Quarterly Average Speeds: Historic to Q3-2017.

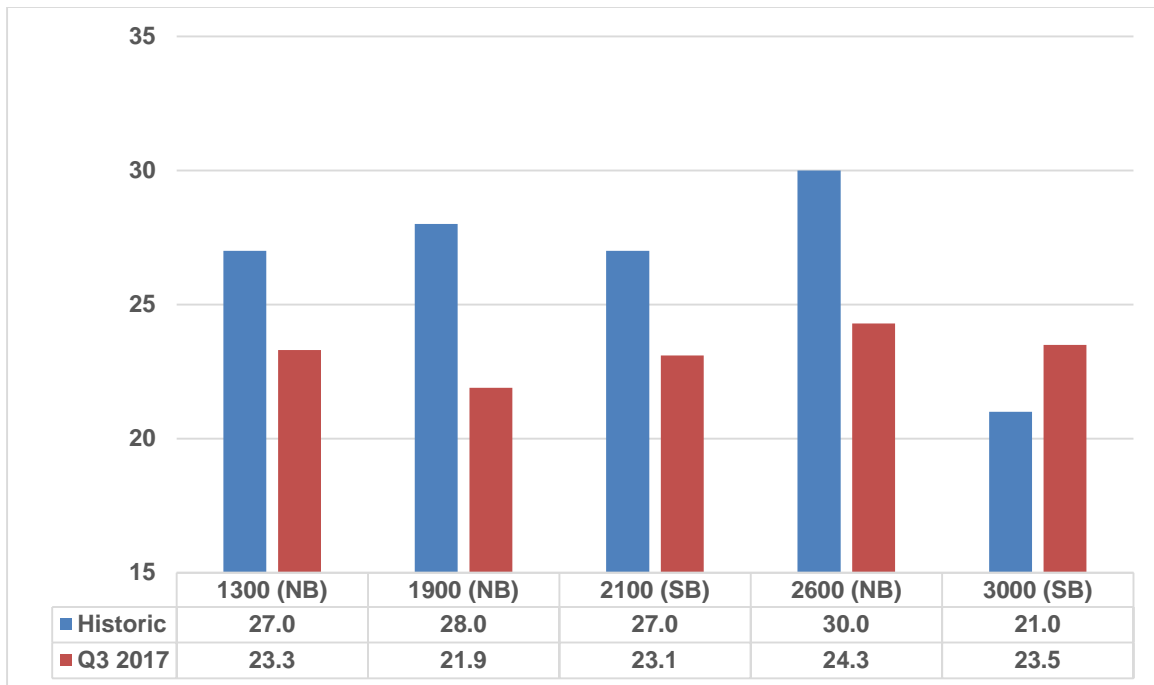


Figure 4. Comparison of Quarterly Average Speeds (92nd): Historic to Q3-2017.

### **Comparison of Quarterly 85<sup>th</sup> Percentile Speeds:**

As a result of only being able to collect one month of data for Q2 2017 (the beginning of this program), this quarter's 85<sup>th</sup> percentile speeds are being compared to the historic 85<sup>th</sup> percentile speeds. The comparison of these two sets indicates that the 85<sup>th</sup> percentile speeds have dropped noticeably in all instances, with the exception of one.

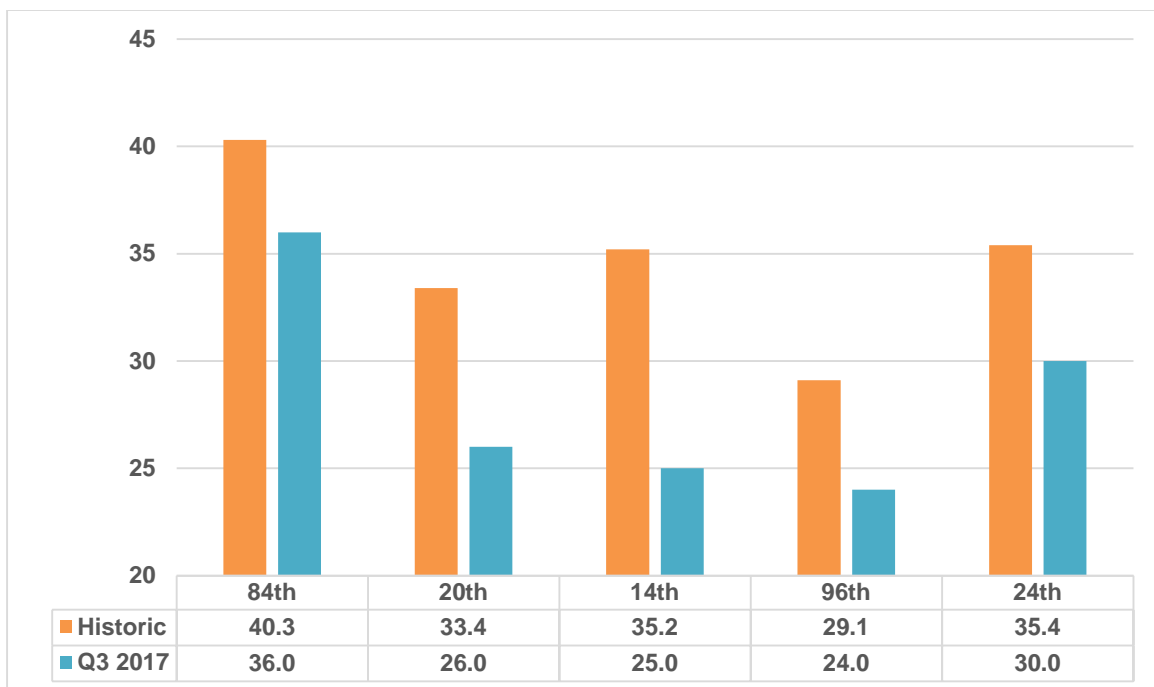


Figure 5. Comparison of Quarterly 85<sup>th</sup> Percentile Speeds: Historic to Q3-2017.

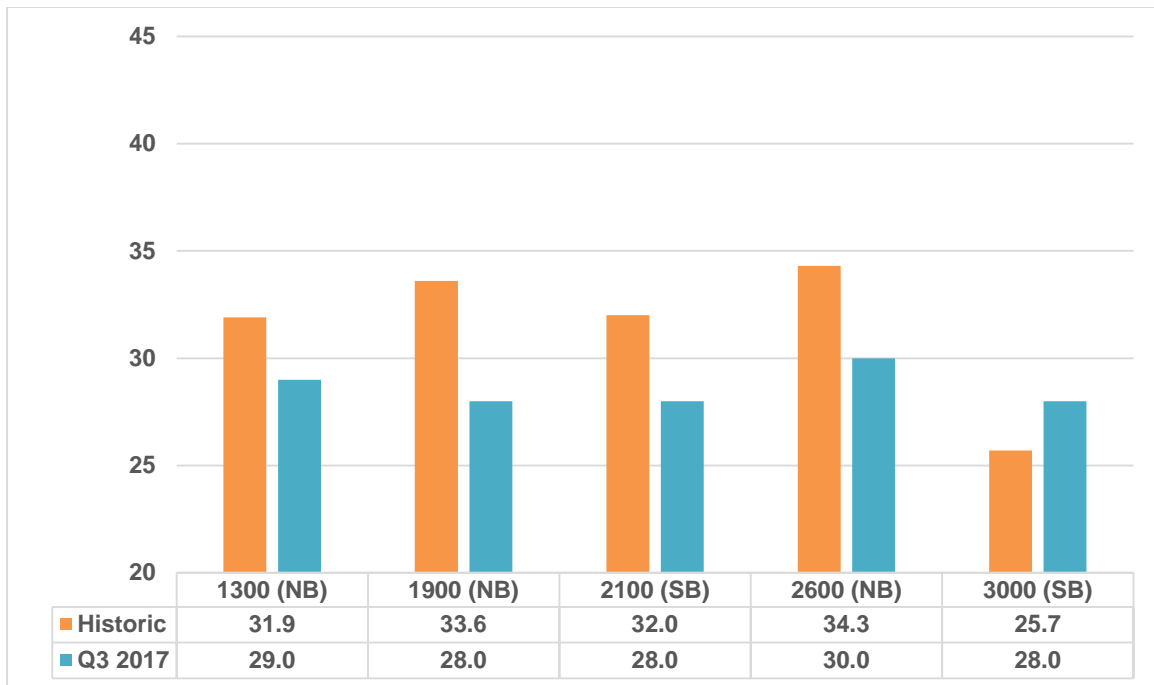


Figure 6. Comparison of Quarterly 85th Percentile Speeds (92nd): Historic to Q3-2017.

### **Findings & Conclusions:**

The Council's intent and purpose of installing the ten speed signs, to slow down drivers, is being achieved. Speeds have decreased and, furthermore, have normalized to levels at or below the posted speed limits.